

INTRODUCTION to the RECORDER - Grade 4

HOLDING THE RECORDER

Left Hand on Top!!!

Put your first three fingers on the top three holes on the front of the recorder. Your left thumb covers the hole in the back.

Right Hand on the Bottom!!!

Put your right hand fingers on the next four holes on the front of the recorder. Your ring finger and your pinky cover two holes in one space. Your right thumb has no hole to cover and is used to steady the recorder when you play.

MAKING A SOUND

To make a sound on the recorder, place the mouthpiece on your lower lip. Just a little goes a long way; blow *very gently*. Blowing too hard will cause a high squeak

Cover the holes with the Fat, Flabby, Flat, Fleshy part of your Fingerprint. Cover the holes *completely*. Leaks cause squeaks!

HELP! I DON'T KNOW WHERE TO START!

1. **RHYTHM:** Chant the rhythm syllables for the song
2. **NOTE NAMES:** Figure out the note names (B,A,G) for the song and *sing* the notation.
3. **FINGERINGS:** Review the fingerings for the notes and SINGER (finger + sing) the note names.
4. **PLAY THE SONG:** Put the fingerings and the rhythms together to play the song. If it doesn't sound right, start again with step #1.

HELPFUL WEBSITES

If you are having trouble, try using the following websites to help you:



<http://mrskreiss.weebly.com>

This is Mrs. Kreiss's web bulletin. You can find many recorder resources here, as well as practice sheets, grading policies, and handouts.



www.musick8.com/rkdojo/rkchart.php

This is one of Mrs. Kreiss's FAVORITES! Just click on the note on the staff, and the recorder cartoon shows you the fingering AND plays the pitch.



www.musick8kids.com/html/musicgame.php

A game to help you learn your note names. Play Level 1.



www.youtube.com/watch?v=KHk0815iB6U&safety_mode=true&persist_safety_mode=1&safe=active

A YouTube video that introduces you to playing the recorder.



<http://studiokay.com/recorder/Studentsx.html>

A teacher-created website with helpful hints and new music to try!

<http://singtokids.wiki.farmington.k12.mi.us/Recorder+Movies>

A teacher-created website with fantastic videos to teach you how to play songs!

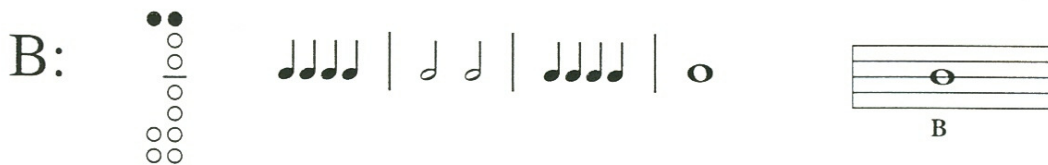
My email: kreisskr@northvilleschools.org

Let's Begin:

Whisper this pattern: doo doo doo doo doo....doo..... doo doo doo doo doo.....
When you say doo, your tongue lets the air out. This is called tonguing. You should blow into your recorder the same way, connecting the notes.

Cover the hole at the back of the recorder with your left thumb, and the top hole of the recorder with your left pointer finger and play this pattern on the note B.

B:

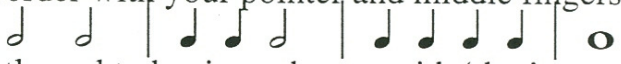


Always blow gently.....whisper warm air into the recorder.

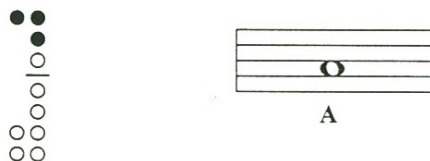
1. Just B 2 bar intro



Cover the hole at the back of the recorder with your left thumb, and the top two holes of the recorder with your pointer and middle fingers and play this pattern on the note A:



Remember to blow gently and to begin each note with 'doo'.



2. Just A 2 bar intro



3. A and B Blues

2 bar intro

Three staves of musical notation in treble clef, 4/4 time. The first staff contains a 2-bar intro: two measures of quarter notes (G4, A4) and (B4, A4). The second staff contains a 2-bar intro: two measures of half notes (G4, B4) and (A4, G4). The third staff contains a 2-bar intro: two measures of quarter notes (G4, A4) and (B4, A4), followed by a 2-bar intro: two measures of quarter notes (G4, A4) and (B4, A4), and a final measure with a whole note (G4).

Two guitar chord diagrams for the G chord. The first diagram shows a single dot on the second string, second fret, with the letter 'G' below it. The second diagram shows a vertical stack of dots: three solid black dots on the first three strings (E, B, G) at the second fret, and four open circles on the last four strings (D, G, B, E) at the open position.

4. Just G

2 bar intro

Two staves of musical notation in treble clef, 4/4 time. The first staff contains a 2-bar intro: two measures of quarter notes (G4, A4) and (B4, A4), followed by a 2-bar intro: two measures of quarter notes (G4, A4) and (B4, A4), and a final measure with a whole note (G4). The second staff contains a 2-bar intro: two measures of quarter notes (G4, A4) and (B4, A4), followed by a 2-bar intro: two measures of quarter notes (G4, A4) and (B4, A4), and a final measure with a whole note (G4).

Name your Notes:

Two staves of musical notation in treble clef, 4/4 time. The first staff contains a sequence of notes: B4, A4, G4, followed by seven blank lines for naming. The second staff contains a sequence of notes: G4, A4, B4, followed by seven blank lines for naming.

5. G and A Blues

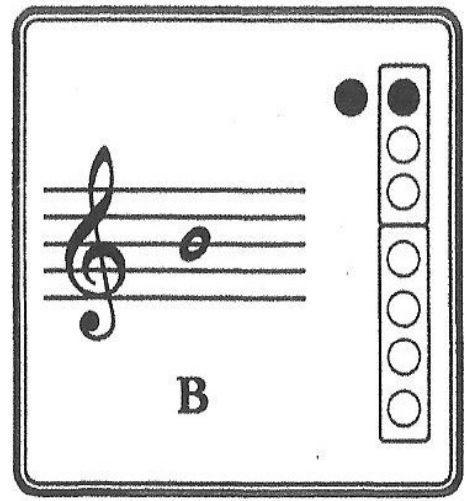
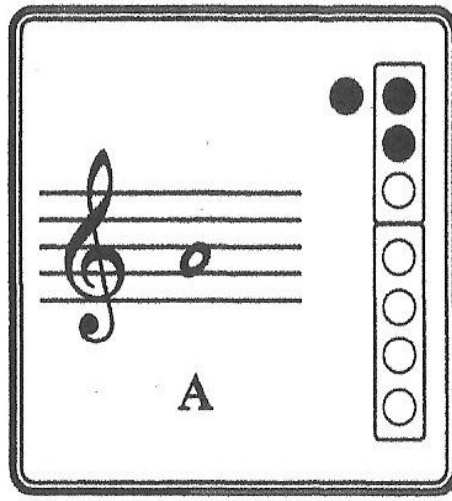
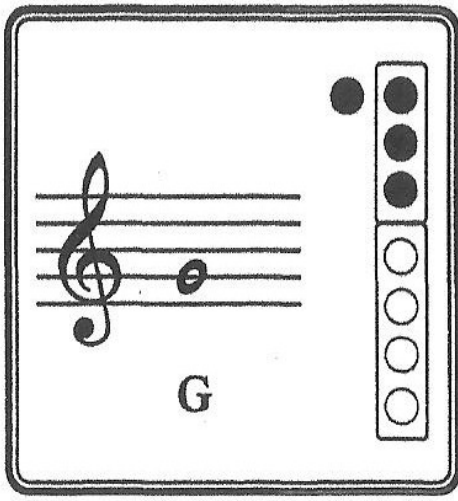
2 bar intro

Three staves of musical notation in treble clef, common time (C). The first staff contains a 2-bar introduction: a quarter note G4, a quarter note A4, a quarter note G4, and a quarter note F#4. The second staff contains the first four bars of the main melody: a quarter note G4, a quarter note A4, a quarter note G4, a quarter note F#4; a quarter note G4, a quarter note A4, a quarter note G4, a quarter note F#4; a quarter note G4, a quarter note A4, a quarter note G4, a quarter note F#4; and a half note G4. The third staff contains the next four bars: a quarter note G4, a quarter note A4, a quarter note G4, a quarter note F#4; a quarter note G4, a quarter note A4, a quarter note G4, a quarter note F#4; a quarter note G4, a quarter note A4, a quarter note G4, a quarter note F#4; and a half note G4. The piece ends with a double bar line and repeat dots.

6. Side Step

2 bar intro

Two staves of musical notation in treble clef, common time (C). The first staff contains a 2-bar introduction: a quarter note G4, a quarter note A4, a quarter note G4, and a quarter note F#4. The second staff contains the first four bars of the main melody: a quarter note G4, a quarter note A4, a quarter note G4, and a quarter note F#4; a quarter note G4, a quarter note A4, a quarter note G4, and a quarter note F#4; a quarter note G4, a quarter note A4, a quarter note G4, and a quarter note F#4; and a half note G4. The piece ends with a double bar line and repeat dots.



Hot Cross Buns

Soprano Recorder

Folk song arrangement by K. Kreiss



Merrily We Roll Along

Soprano Recorder

American Folk Song arr. K. Kreiss



Eighth Note Encounter

Soprano Recorder

arr. K. Kreiss

Almeida



Buns Cross Hot

Soprano Recorder

arr. K. Kreiss

Unknown



Quarter Note Quickstep

Soprano Recorder

arr. K. Kreiss

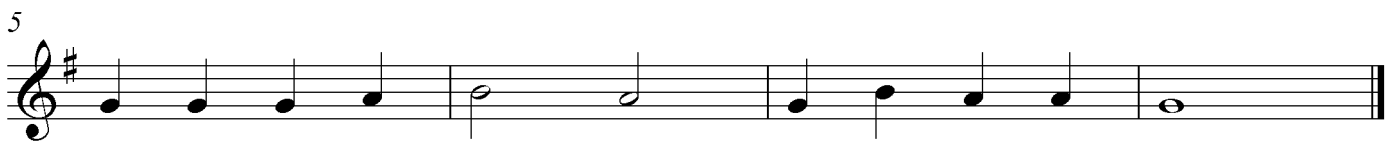
Almeida

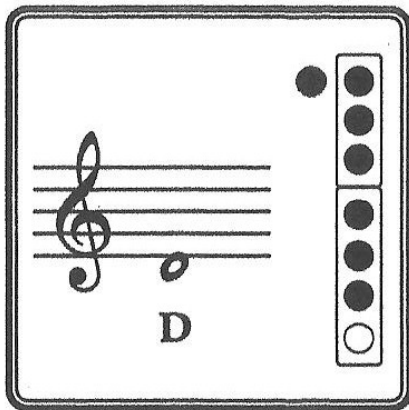


Pierrot

Soprano Recorder

Traditional Folk Song (arr. by Kristin Slocum Kreiss)





Hot Cross Buns

Soprano Recorder

Folk song arrangement by K. Kreiss

Hot cross buns, Hot cross buns, One a pen-ny two a pen-ny, Hot cross buns!

Hot Cross Buns

Bass line

Folk song arrangement by K. Kreiss

Hot Cross Buns

Folk song arrangement by K. Kreiss

Soprano Recorder
Hot cross buns, Hot cross buns,
Bass line

S. Rec. 3
One a pen - ny two a pen - ny, Hot cross buns!
Bass

Merrily We Roll Along

Soprano Recorder

American Folk Song arr. K. Kreiss

5

Musical notation for Soprano Recorder part 1, measures 1-4. The notation is in treble clef, key of D major (one sharp), and 4/4 time. The melody consists of quarter notes in the first two measures and half notes in the last two measures.

Merrily We Roll Along

Bass line

American Folk Song arr. K. Kreiss

5

Musical notation for Bass line part 1, measures 1-4. The notation is in treble clef, key of D major (one sharp), and 4/4 time. The bass line consists of quarter notes in the first two measures and half notes in the last two measures.

Merrily We Roll Along

American Folk Song arr. K. Kreiss

Soprano Recorder

Bass line

5

S. Rec.

Bass

Musical notation for Soprano Recorder and Bass line part 2, measures 5-8. The notation is in treble clef, key of D major (one sharp), and 4/4 time. It shows the continuation of the melody for both instruments.

SALSA!

SHERI JAFFURS

SOPRANO RECORDER

MAKE ME SOME SAL-SA I LIKE IT NICE AND HOT!

BASS LINE

Detailed description: This system contains the first two measures of the piece. The Soprano Recorder part is in treble clef with a key signature of one sharp (F#) and a 4/4 time signature. The melody starts with a quarter note G4, followed by quarter notes A4, B4, C5, D5, and E5. The Bass Line part is in treble clef with the same key signature and time signature. It starts with a quarter note G3, followed by a quarter note F#3, and then a whole note G3. The lyrics are written below the Soprano Recorder staff.

3

S. REC.

MAKE ME SOME SAL-SA I LIKE IT NICE AND HOT!

BASS

Detailed description: This system contains measures 3 and 4. The Soprano Recorder part continues the melody from measure 2. The Bass part continues with a quarter note G3, followed by a quarter note F#3, and then a whole note G3. The lyrics are written below the Soprano Recorder staff.

5

S. REC.

NICE RED TO-MA-TO GREEN CHI-LI PEP-PER

BASS

Detailed description: This system contains measures 5 and 6. The Soprano Recorder part continues the melody. The Bass part continues with a quarter note G3, followed by a quarter note F#3, and then a whole note G3. The lyrics are written below the Soprano Recorder staff.

7

S. REC.

MAKE ME SOME SAL-SA, I LIKE IT NICE AND HOT!

BASS

Detailed description: This system contains the final two measures of the piece. The Soprano Recorder part continues the melody. The Bass part continues with a quarter note G3, followed by a quarter note F#3, and then a whole note G3. The lyrics are written below the Soprano Recorder staff. The system ends with a double bar line.

Eighth Note Encounter

arr. K. Kreiss

Almeida

Musical score for 'Eighth Note Encounter' in 2/4 time, key of D major. The score is arranged for Soprano Recorder and Bass line. The Soprano Recorder part features eighth notes and quarter notes, with a measure rest in the final measure. The Bass line provides a steady accompaniment of quarter notes. A second system shows the Soprano Recorder (S. Rec.) and Bass parts, with a measure rest in the final measure of the S. Rec. part.

Quarter Note Quickstep

arr. K. Kreiss

Almeida

Musical score for 'Quarter Note Quickstep' in 4/4 time, key of D major. The score is arranged for Soprano Recorder and Bass line. The Soprano Recorder part features quarter notes and quarter rests, with a measure rest in the final measure. The Bass line provides a steady accompaniment of quarter notes. A second system shows the Soprano Recorder (S. Rec.) and Bass parts, with a measure rest in the final measure of the S. Rec. part.

Pierrot

Traditional Folk Song (arr. by Kristin Slocum Kreiss)

Musical score for 'Pierrot' in 4/4 time, key of D major. The score is arranged for Soprano Recorder and Bass line. The Soprano Recorder part features quarter notes and half notes, with a measure rest in the final measure. The Bass line provides a steady accompaniment of quarter notes. A second system shows the Soprano Recorder (S. Rec.) and Bass parts, with a measure rest in the final measure of the S. Rec. part.

Over My Head

African American Spiritual (arr. Kristin Slocum Kreiss)

Voice

O-ver my head - - I hear mu-sic in the

Soprano Recorder

O-ver my head

3

Voice

air O-ver my head I hear mu-sic in the

S. Rec.

I hear mu-sic in the air O-ver my head

7

Voice

air O-ver my head I hear mu-sic in the

S. Rec.

I hear mu-sic in the air O-ver my head

11

Voice

air There must be a God somewhere!

S. Rec.

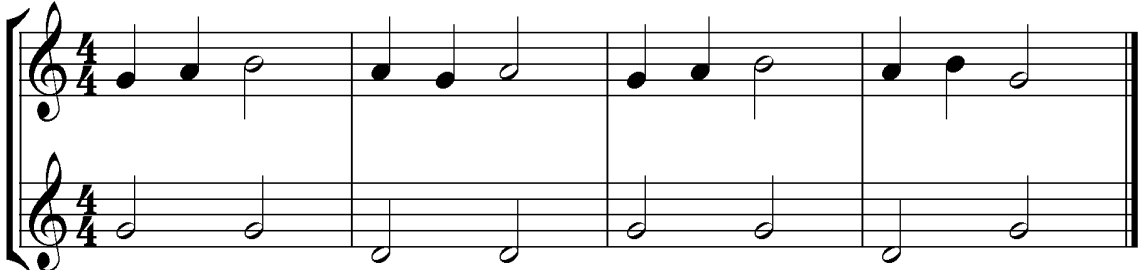
I hear mu-sic in the air There must be a God somewhere!

Suo Gan

arr. K. Kreiss

Chinese folk song

Soprano Recorder



Bass line


Detailed description: This block contains the musical notation for the piece 'Suo Gan'. It features two staves: a Soprano Recorder staff in the upper position and a Bass line staff. Both staves are in 4/4 time and use a treble clef. The key signature has one sharp (F#). The melody consists of quarter and eighth notes, with some rests. The bass line provides a simple accompaniment with quarter notes.

Half Note Hop

arr. K. Kreiss

Almeida


Soprano Recorder



Bass line

Detailed description: This block contains the musical notation for 'Half Note Hop'. It features two staves: a Soprano Recorder staff and a Bass line staff. Both are in 4/4 time and use a treble clef with a key signature of one sharp (F#). The melody is characterized by half notes and quarter notes. The bass line consists of quarter notes.

S. Rec.



Bass line

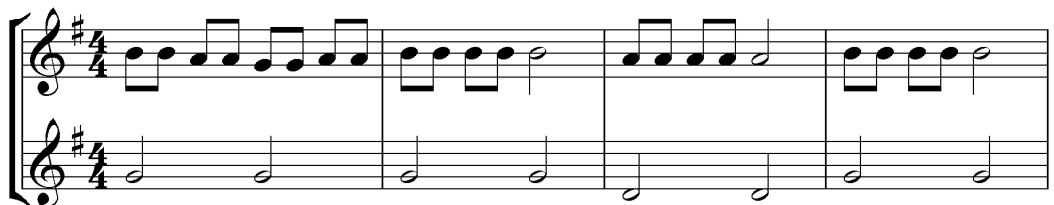
Detailed description: This block contains the musical notation for 'Half Note Hop', showing an alternative fingering for the Soprano Recorder. The staff is labeled 'S. Rec.' and includes a fingering number '5' above the first note. The notation is identical to the previous block, including the Bass line staff.

Mary's Busy Lamb

arr. K. Kreiss

Almeida

Soprano Recorder



Bass line

Detailed description: This block contains the musical notation for 'Mary's Busy Lamb'. It features two staves: a Soprano Recorder staff and a Bass line staff. Both are in 4/4 time and use a treble clef with a key signature of one sharp (F#). The melody is a lively eighth-note pattern. The bass line consists of quarter notes.

S. Rec.



Bass

Detailed description: This block contains the musical notation for 'Mary's Busy Lamb', showing an alternative fingering for the Soprano Recorder. The staff is labeled 'S. Rec.' and includes a fingering number '5' above the first note. The notation is identical to the previous block, including the Bass line staff.

Wacky Waltz

Almeida

Soprano Recorder

Bass line

Steps and Skips

Almeida

Soprano Recorder

Step-ping, step-ing down the line, Skip-ping, skip-ping, feels so fine!

Good News!

Almeida

Soprano Recorder

Bass line

S. Rec.

Bass

All Aboard!

Almeida

Soprano Recorder

Chat-ta-noo-ga choo choo, Pig-gy-back line, Sil-ver Streak, run-nin so fine.

Bass line

Detailed description: This system contains the first four measures of the piece. The Soprano Recorder part is in treble clef with a key signature of one sharp (F#) and a 4/4 time signature. The melody consists of quarter notes: G4, A4, B4, C5, D5, E5, F#5, G5, A5, B5, C6, D6, E6, F#6, G6, A6, B6, C7. The Bass line is in treble clef with the same key signature and time signature, playing a simple accompaniment of quarter notes: G3, A3, B3, C4, D4, E4, F#4, G4, A4, B4, C5, D5, E5, F#5, G5, A5, B5, C6.

5

S. Rec.

Il-li-nois Cen-tral, San-ta Fe, Sea-board Coast-line, slic-ing through the day!

Bass line

Detailed description: This system contains measures 5-8. The Soprano Recorder part continues the melody from the previous system. The Bass line continues the accompaniment. The system ends with a double bar line.

Down by the Station

Almeida

Soprano Recorder

Bass line

Detailed description: This system contains the first four measures of the piece. The Soprano Recorder part is in treble clef with a key signature of one sharp (F#) and a 4/4 time signature. The melody consists of quarter notes: G4, A4, B4, C5, D5, E5, F#5, G5, A5, B5, C6, D6, E6, F#6, G6, A6, B6, C7. The Bass line is in treble clef with the same key signature and time signature, playing a simple accompaniment of quarter notes: G3, A3, B3, C4, D4, E4, F#4, G4, A4, B4, C5, D5, E5, F#5, G5, A5, B5, C6.

5

S. Rec.

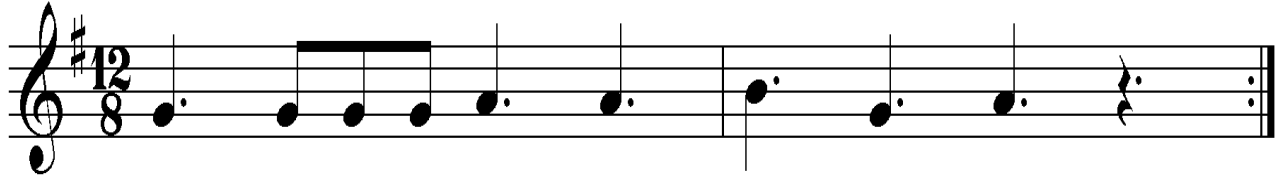
Bass

Detailed description: This system contains measures 5-8. The Soprano Recorder part continues the melody from the previous system. The Bass line continues the accompaniment. The system ends with a double bar line.

Nutcracker March Theme

Tchaikovsky, arr. Kristin Slocum Kreiss

Soprano Recorder



RECORDER FINGERING CHART

The hole that is outside the box indicates the thumbhole on the back of the recorder.
When the circle is black, cover that hole with the correct finger.

